

ALL-O-MATIC®



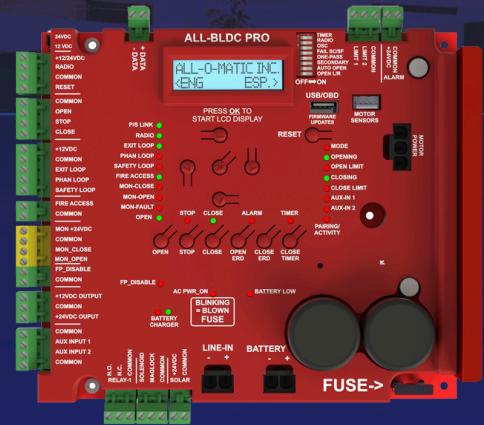
818-787-1988

allomatic.net

SL-150DC PRO

SLIDE GATE OPERATOR

ALL-BLDC PRO CONTROL BOARD



ALL-BLDC PRO FEATURES

- ✓ LCD DISPLAY WITH ON BOARD DIAGNOSTICS
- ✓ AUTO CLOSE TIMER & OBSTRUCTION SENSING DIGITAL ADJUSTMENTS
- ✓ INTEGRATED WIRELESS PRIMARY/SECONDARY
- ✓ PARTIAL OPEN OPTION
- ✓ PROGRAMMABLE AUXILIARY INPUTS
- ✓ USB PORT TO EXTRACT DIAGNOSTIC DATA AND FIRMWARE UPDATES
- ✓ BUILT-IN VOLT METER THROUGH LCD DISPLAY
- ✓ CYCLE COUNTER AND MUCH MORE



MECHANICAL
FOOT PEDAL
RELEASE



AOM-RED EYE
INCLUDED



RESIDENTIAL



COMMERCIAL

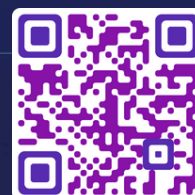


INDUSTRIAL

SLIDERS | SWINGERS | OVERHEADS

The standard by which all other automatic gate operators are measured.

SCAN FOR
PRODUCT
INFORMATION



UL 325 2018
COMPLIANT

UL 991
COMPLIANT

CSA C22.2 #247



818-787-1988

allomatic.net

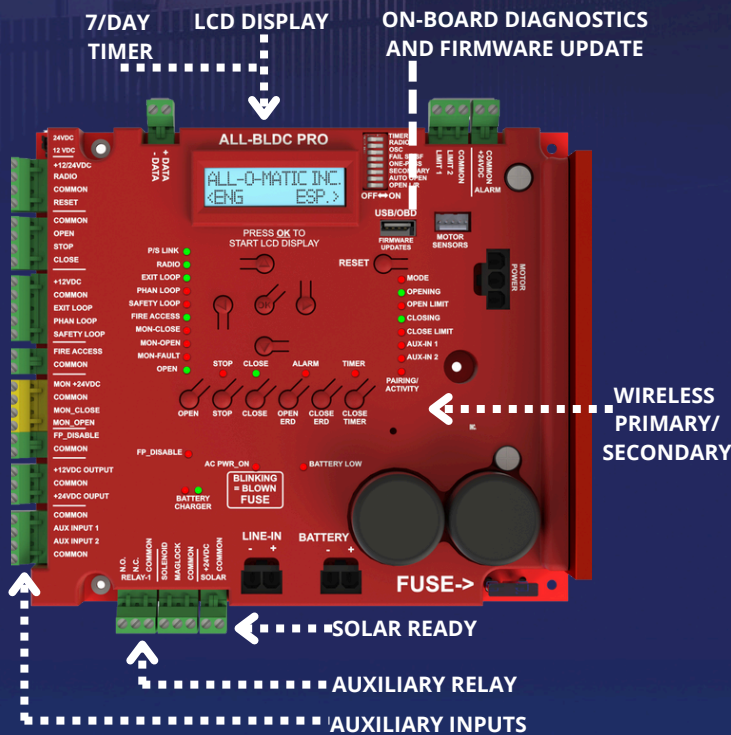
SCAN FOR
PRODUCT
INFORMATION

SL-150DC PRO

SLIDE GATE OPERATOR

SPECS

Max Gate Weight	½ HP: 3,000 lbs. 1 HP: 4,000 lbs.
Max Gate Length	60 feet
Warranty	7 year residential - 5 year commercial
Motor	24 VDC brushless – ½ HP and 1 HP motor
Gate Speed	Adjustable 6"-12" per second
Power Options	115/230 VAC single phase and 24 VDC solar panel
Duty Cycle	Continuous
Battery Backup	Integrated, with (2) 7Ah 12VDC batteries
Battery Backup Capacity	100 cycles on a 1,000 lb. gate
Temperature Range	-40 to 160°
Gearbox Ratio	30:1 with internal clutch
Width X Length X Height	15" X 19.5" X 25"
Shipping Weight	150 lbs.
Emergency Release	Mechanical foot pedal release
Main Sprocket Size	40B22X1
Chain Size	40NP (20' included)
Gearbox Sprocket	40B22X1
Limit Shaft Sprocket	41B10X5/8
Breaker Requirement	20 amp dedicated



AVAILABLE ACCESSORIES



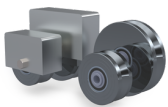
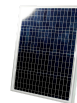
RESIDENTIAL



COMMERCIAL



INDUSTRIAL

V-Groove
WheelsTK-1000
Tandem KitFire
Boxes24V
Solar
PanelPRIME VD-1
Loop Detector

The Warrantor warrants the SL-150DC PRO Gate Operator. ALL-O-MATIC INC warrants its gate openers for a period of five (5) years in commercial installations, and for a period of seven (7) years in residential installation to be free from defects in circuitry, motor, gear box and workmanship. This warranty applies from the date of purchase to the original owner. Warrantor will repair or, at its option, replace any device which it finds to require service. This device must be sent to the warrantor at the consumer's expense. The warrantor will return the repaired or replaced unit to the customer at the consumer's expense. Labor charges for dealer service or replacement are the responsibility of the owner. These warranties are in lieu of all other warranties either expressed or implied, and ALL-O-MATIC INC shall not be liable for consequential damage. All implied warranties of merchantability and or fitness for a particular purpose are hereby disclaimed and excluded. This limitation is not valid in jurisdictions which do not allow limitation of incidental or consequential damages or limitation of warranty periods. Caution in order to obtain this policy, please complete the registration card and send it by mail within 30 days of purchasing from ALL-O-MATIC INC. or your INSTALLER. If not registered only a one year warranty on all parts will be provided.

The standard by which all other **automatic gate operators** are measured.

UL 325 2018 COMPLIANT UL 991 COMPLIANT

CSA C22.2 #247